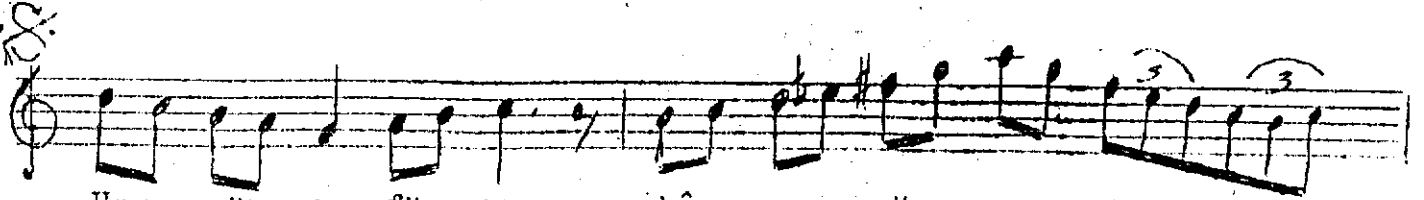


Her an o siyah göz.. le ri nin nu.... ru nayan



san-----S A Z-----

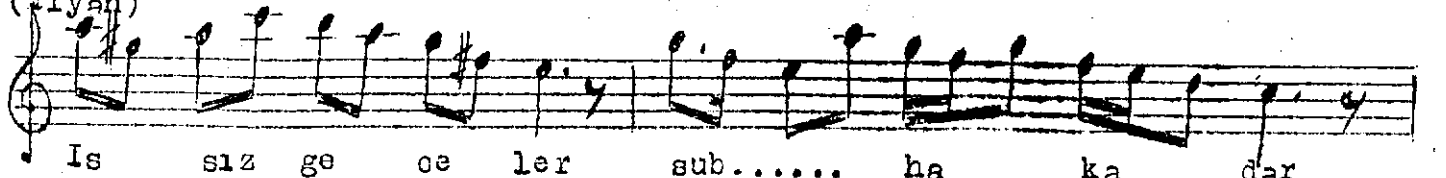
san-----S A Z-----



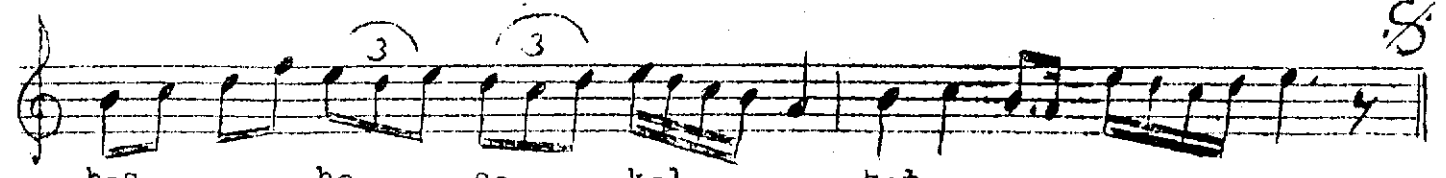
Her gün o fû sun kâr..... sö zü nün  
Kal san ne o lur aş..... kı nın ez



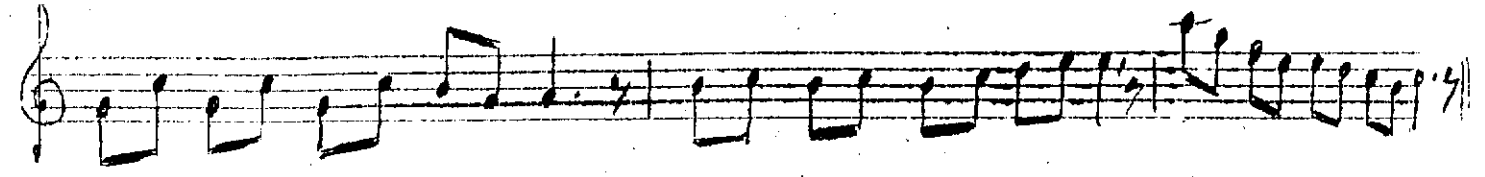
sih..... ri ne dal san  
va..... kı na kan san san



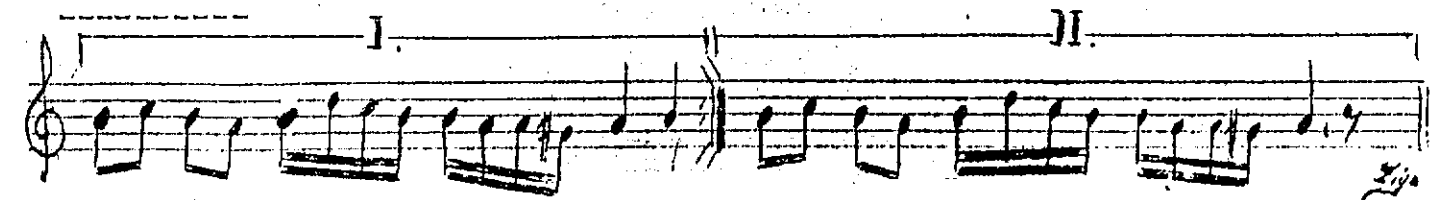
Is sız ge ce ler sub..... ha ka dar



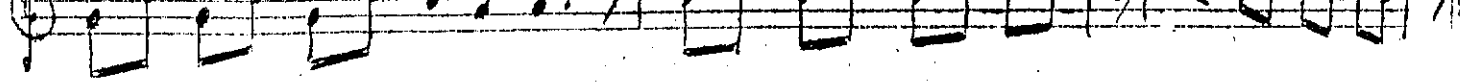
baş..... ba şa kal ..... mah .



Aranâgîe



Her an o siyah gözlerinin nuruna yansam  
Her gün o füsunkâr sözünün sihri ne dalsam,  
İsuz geceler supha kadar başbaşa kalsam  
Kalsam ne olur aşkının özvekinâ kânsam...



Aranagme



Aytaç ERGEN